

GALLERY
APT
POSITIVE

Gallery Art Positive

presents

THE POETICS OF SPACE

Curated by Pranamita Borgohain

Ankon Mitra | Jignesh Panchal | Santanu Dey | Saravanan Parasuraman
Shalina S Vichitra | Suryakanta Swain | R Janarthanan | Tapasya Gupta

Online Exhibition

Tue, 2nd June 2020

The Poetics of Space

Spaces can be perceived in myriad ways. The exhibition 'The Poetics of Space' intends to explore the real, imagined, or implied narratives connected to spaces around us. There is also an attempt to realize the use of materiality whether it is fragile or concrete, bringing in artworks in varied mediums including drawing, painting, collage, sculpture or an assemblage. In 1958, Bachelard published *La Poétique de l'Espace* – The Poetics of Space – a densely lyrical, almost magical book on our experience of architecture where he talks about the realms we inhabit i.e. indoor and outdoor.

The works in the exhibition try to narrate the hidden histories or embedded memories and emotions. The interiors devoid of people are like empty stage sets waiting for actors to animate them. Whether public or private, all of these interior settings are activated by the presence (or absence) of humans. Amidst the current global pandemic where all of us are confined to our interiors, has created a new play of exploration of the spaces within that confinement or introspection within our inner self. The lockdown has definitely entailed a spatial reconfiguration to all of us.

In early and mid-20th century, with the advent of modern movement in architecture, the concept of space became ubiquitous in the field of architecture. It has become the defining element in the symmetry and a salient feature of the interior and exterior of any concurrent structure. Basically, imbibing the desired innovation and moving beyond the notion of systematic development of styles in the architectural practice. Soon, the space has become a point of reflection and instigation for major intellectuals of the society and the creative professionals. French philosopher Michel Foucault says 'Ours is the epoch of space, an expanded field imbued with complex meanings.'

Here, we are not only inquisitive about the existential nature of space, but also aiming to investigate the extent of how physical spaces affect us in our creative processes. What is an empty space? How spaces are changing over the years? How a physical space is different from a mental space? Do we feel guided if there is a pre-conceived notion of virtual in place of physical?

Pranamita Borgohain, Curator
Participating Artists:

Ankon Mitra



Aakash-Ganga Mandala- Orion Arm
Cast-Brass from Hand-Folded Cardboard Moulds
variable (32 pieces of 10 & 6 inches)

Ankon Mitra



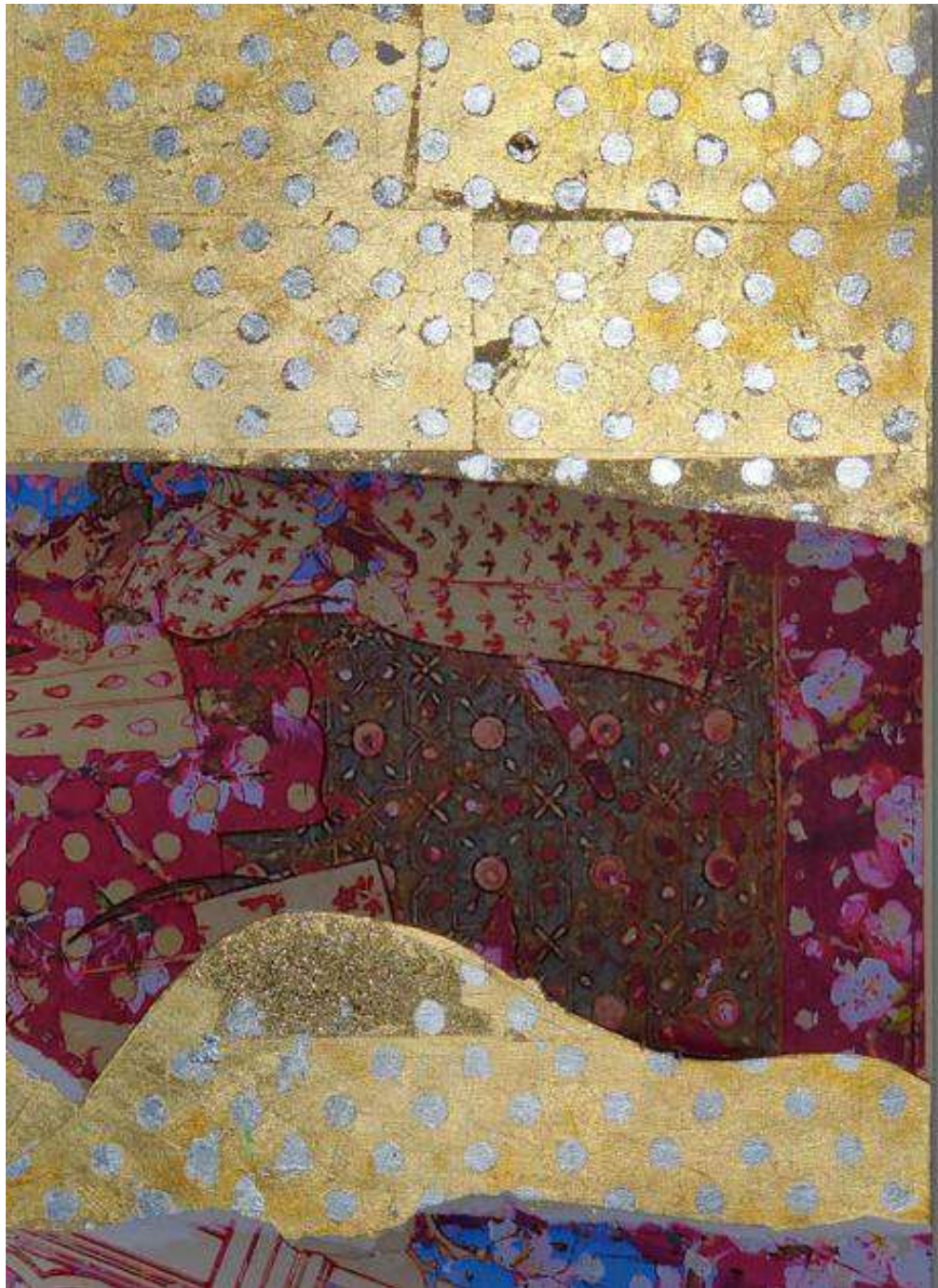
The Space Between Two Stellar Objects
Goat-Hide Parchment Leather, Wood Veneer,
Hand-Folded; LED Lights
60" x 36" x 24", 20" dia (each)

Jignesh Panchal



6th April 2020
Gold/silver leafing on mount board
16.5" x 11.5"

Jignesh Panchal



6th April 2020
Gold/silver leafing on mount board
16.5" x 11.5"

Jignesh Panchal



6th April 2020
Gold/silver leafing on mount board
16.5" x 11.5"

Jignesh Panchal



Flowers Of The Past III
Mixed Media On Paper
40"x 27"

R Janarthanan



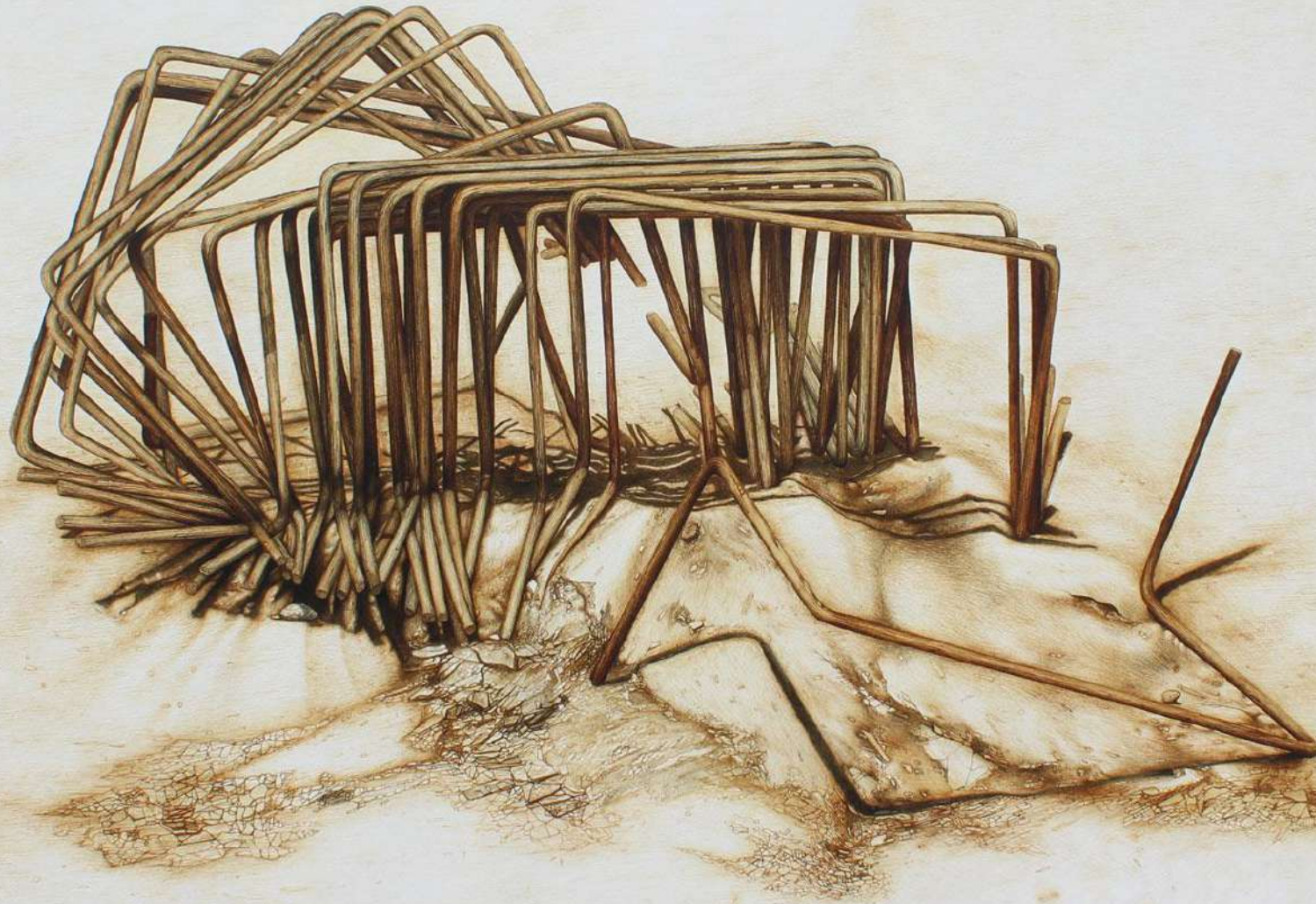
Construction
Iron
103" x 60" x 8"

R Janarthanan



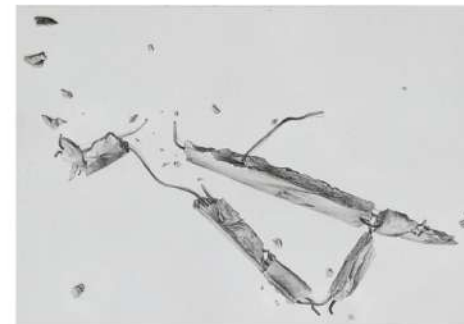
Nest
Stainless steel
61" x 19" x 4"

Suryakanta Swain

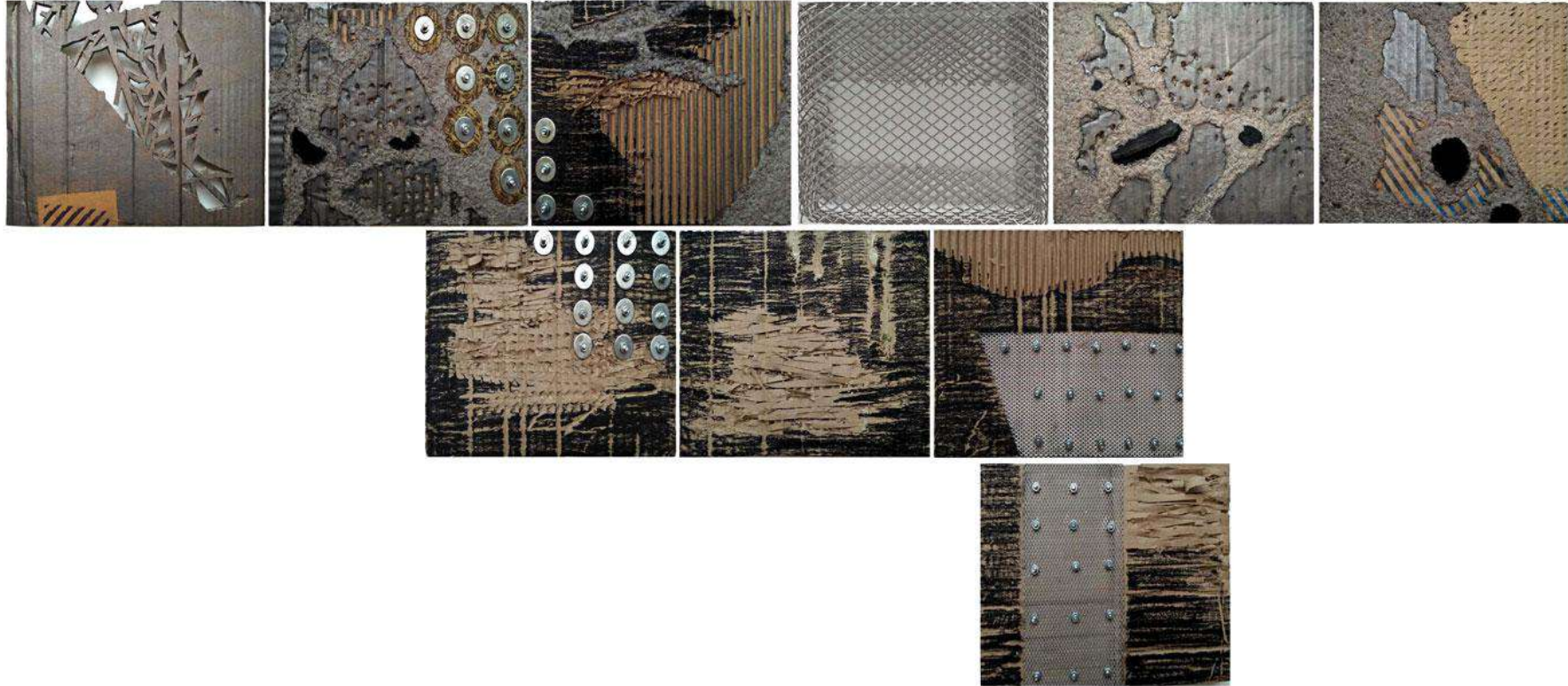


Revision of Constructively
Ink on paper
22" x 30"

Suryakanta Swain

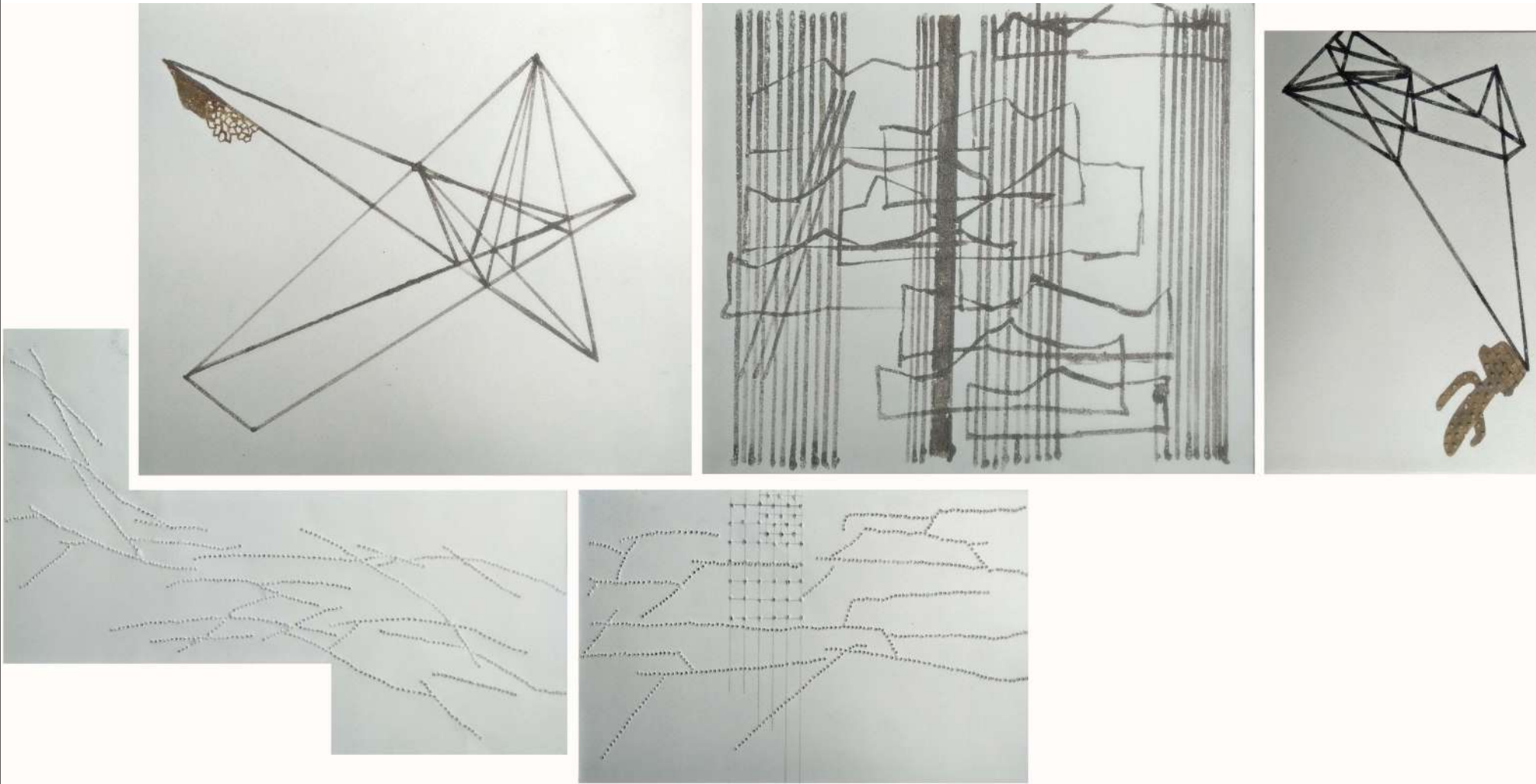


Objects and Observations
Ink on Paper
8.2" x 11.8" each (Set of 10)



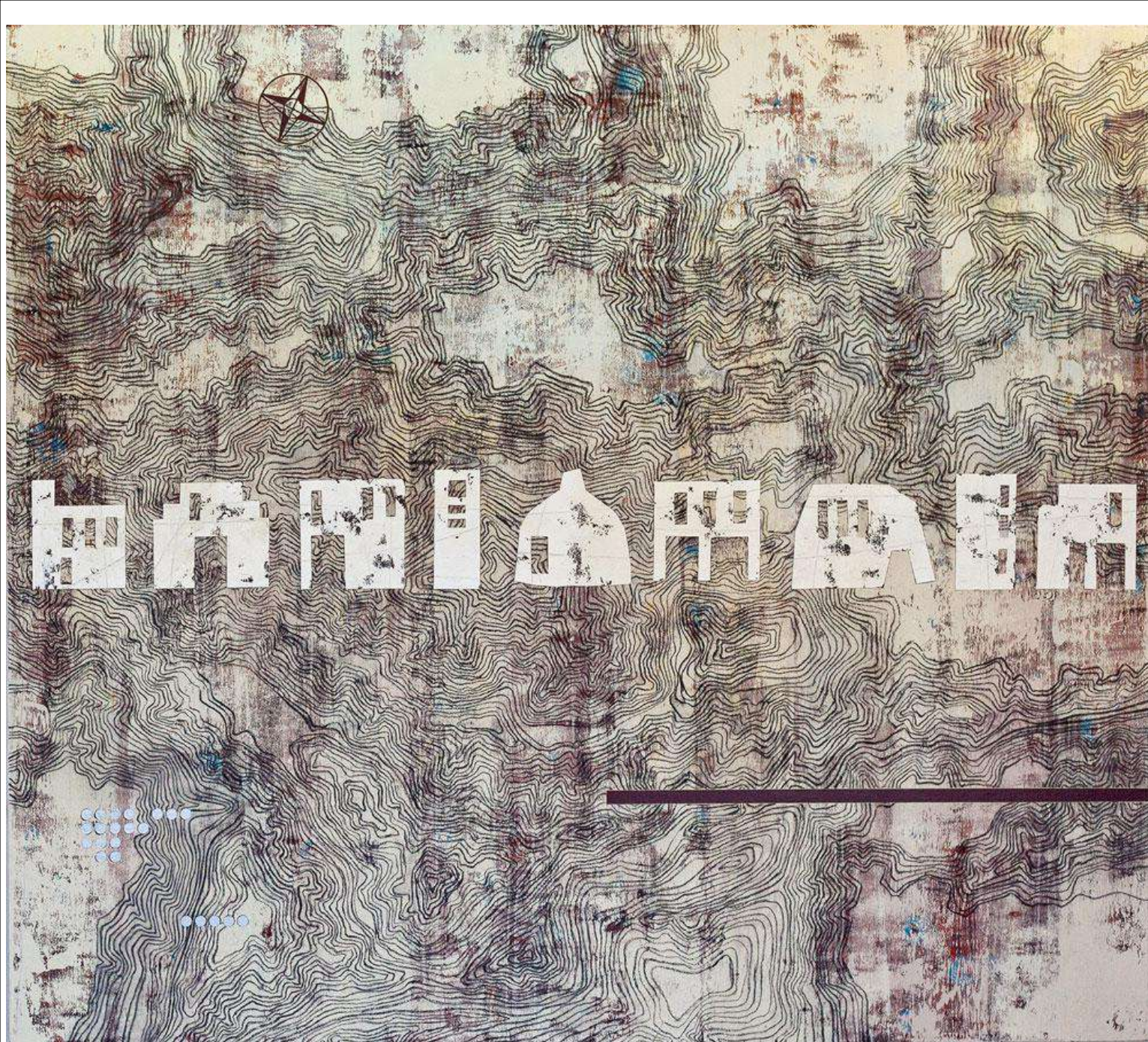
Subarnarekha-The Golden River
Scrap Carton box, charcoal, graphite, iron,
thread and aluminium net
Size variable

Santanu Dey



Horizon
Clay, sand cement mixture, stainless
steel dust, perforation on paper
Size variable

Shalina S Vichitra

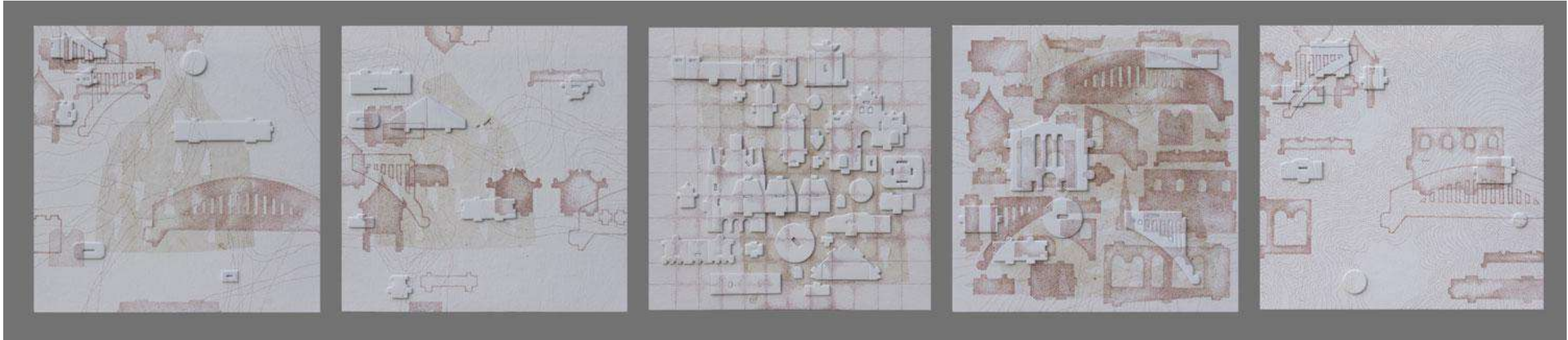


Where on Earth
Acrylic and Charcoal on Canvas
80" x 60"

Shalina S Vichitra



Shelters
Acrylic and Charcoal on Canvas
52" x 52"



Grain Series- 'Deconstructed' a,b,c,d,e
Mixed media
10" x 10" each (Set of 5)

Sarvanam Parasuraman



Accumulation I
Steel balls and fiberglass
36" x 36" x 5"

Sarvanam Parasuraman



Accumulation II
Steel balls and fiberglass
36" x 36" x 5"

Sarvanam Parasuraman



Accumulation III
Steel balls and fiberglass
36" x 36" x 5"

Tapasya Gupta



Sweet Days of Summer series
Fibreglass, resin, wood and metal wire
32" x 15" x 14"

Tapasya Gupta



Sweet Days of Summer series
Fibreglass, resin, wood and metal wire
28" x 15" x 10"



Gallery Art Positive
F 213/ B Lado Sarai
New Delhi 110030
Tel :011 - 41602545
E-mail :info@galleryartpositive.com
www.galleryartpositive.com